

City of Meriden Roadway Evaluation Study (1 South Mountain Road and 600 South Mountain Road)

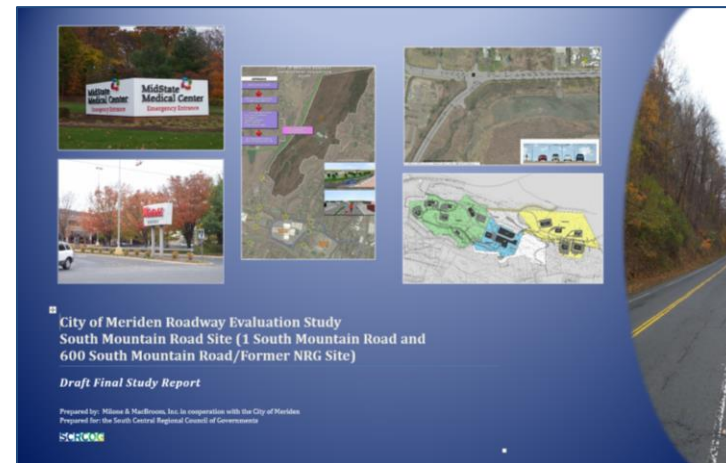
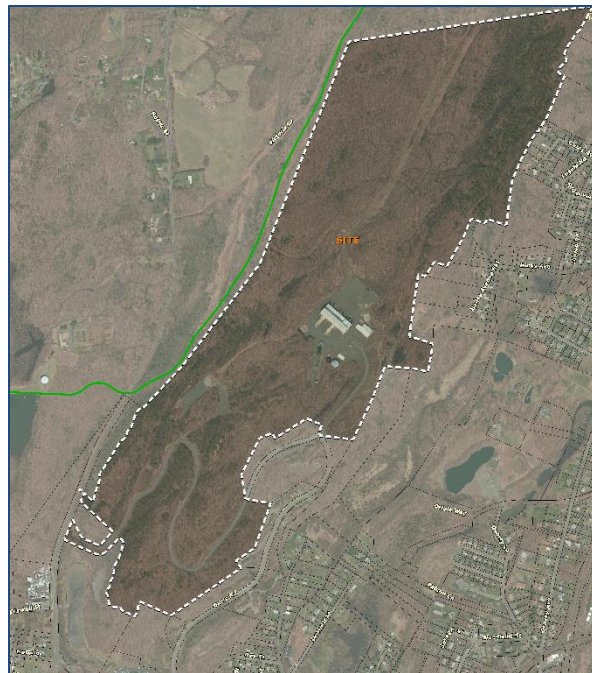


Presentation to City of Meriden Council



Study Goals and Objectives

“To assess existing and future traffic conditions and provide recommendations to address traffic impacts that could result from the potential development of the study site”.



Project Management

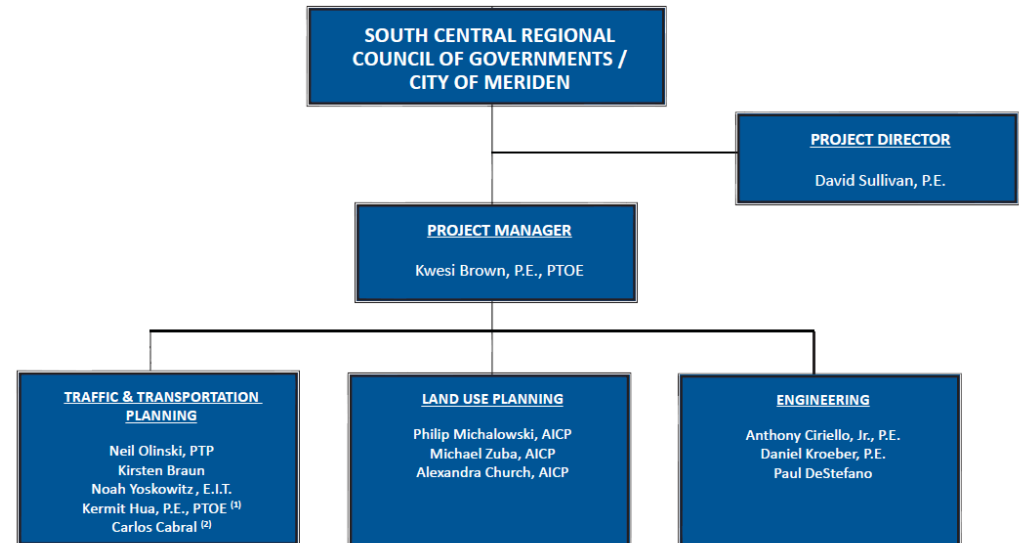
Study Stakeholders

- South Central Regional Council of Governments
- City of Meriden
- General Public



Organization Chart

FY 2015 Transportation Planning Studies

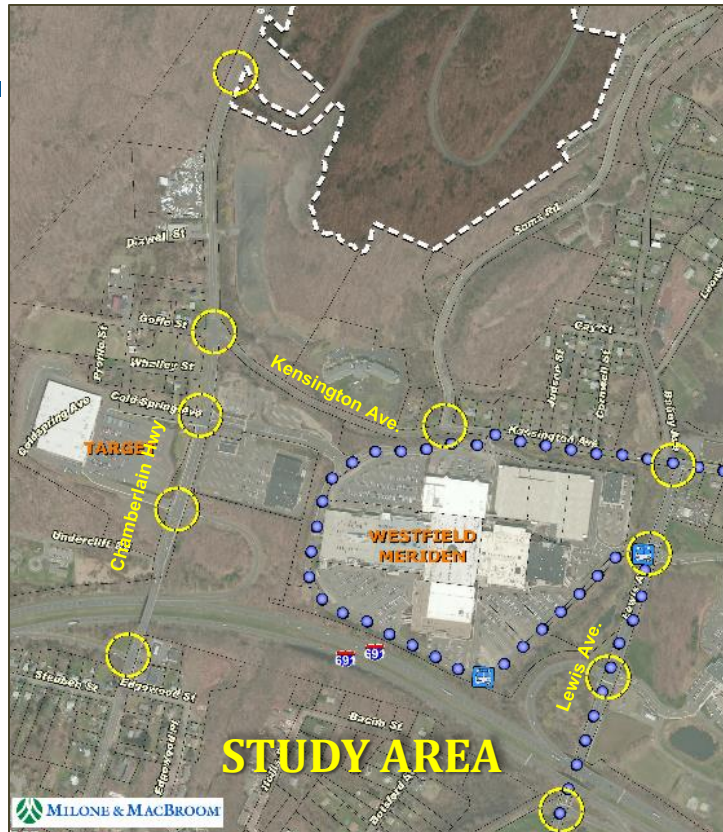


Subconsultants:

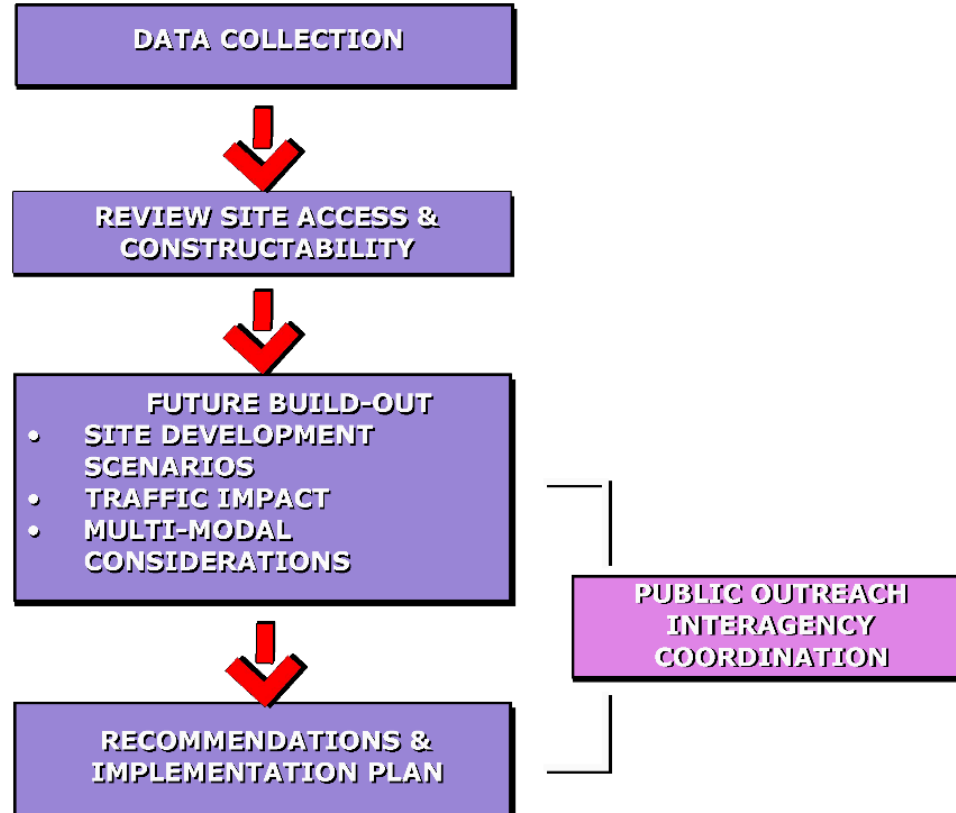
(1) KWH Enterprise, LLC (DBE) / (2) Connecticut Counts, LLC (DBE)

Site Location

- Over 300 acres with approx. 36 acres owned by NRG Company
- Primary access - South Mountain Rd.

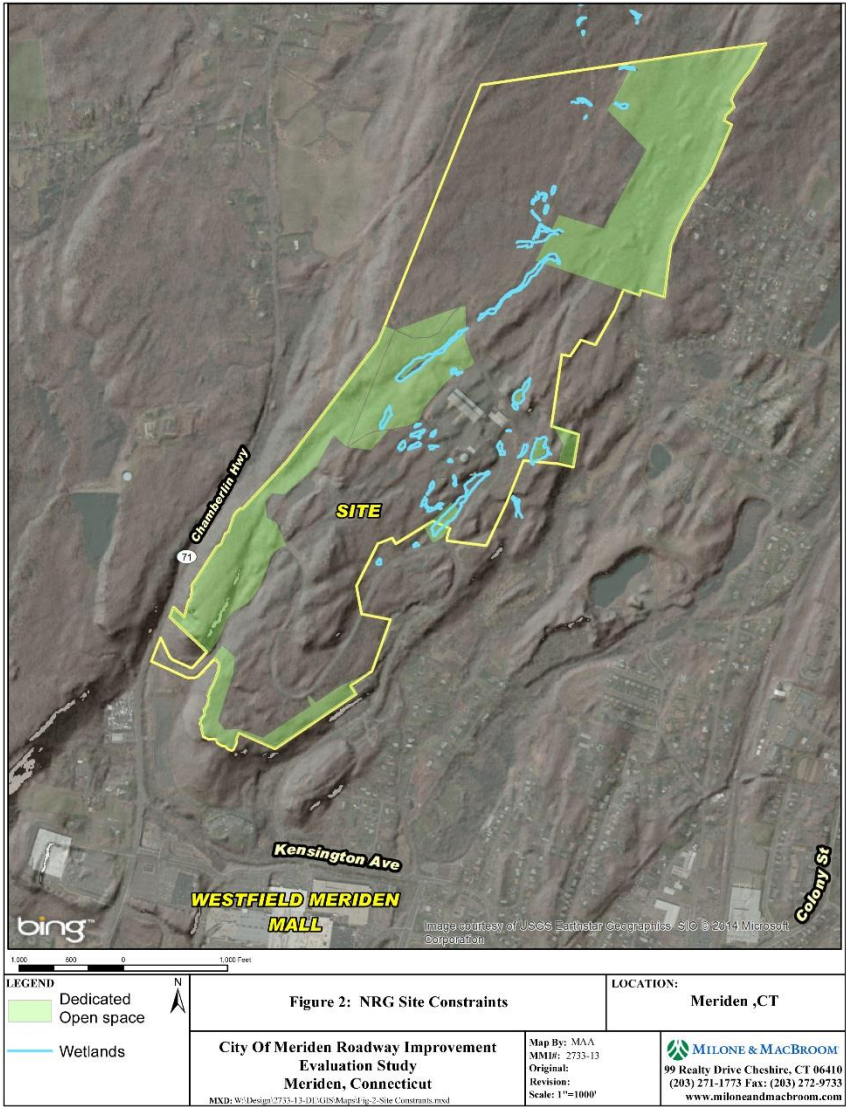


Study Approach



Existing Site Conditions

- Steep topography (25% of site has > 20 percent grades)
- 102 acres of dedicated open space (30%)
- 7.8 acres of wetlands
- Utilities
 - NRG has electric, sewer, gas and water
 - No utilities to rest of site



Existing Safety Conditions - Accident Type

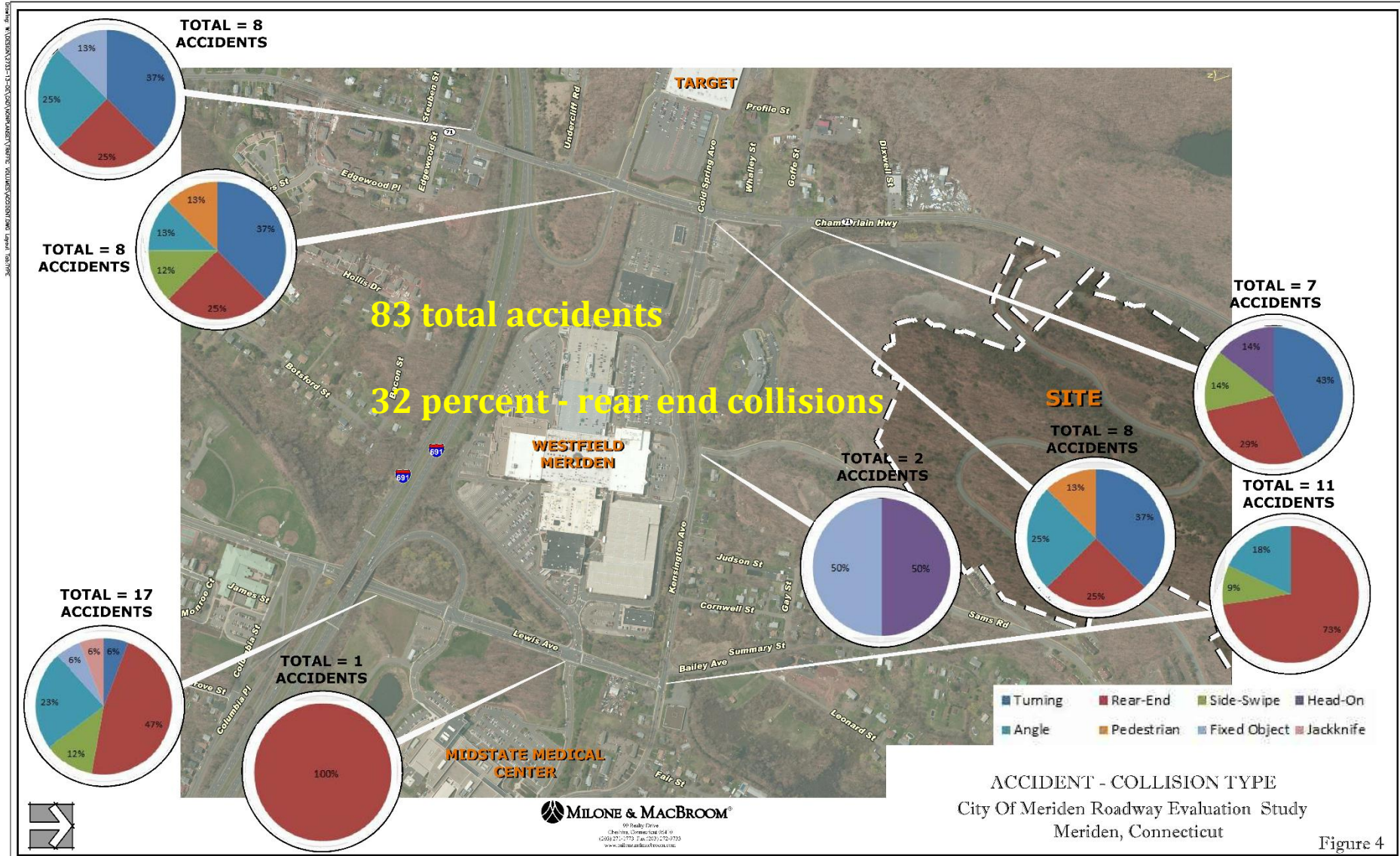
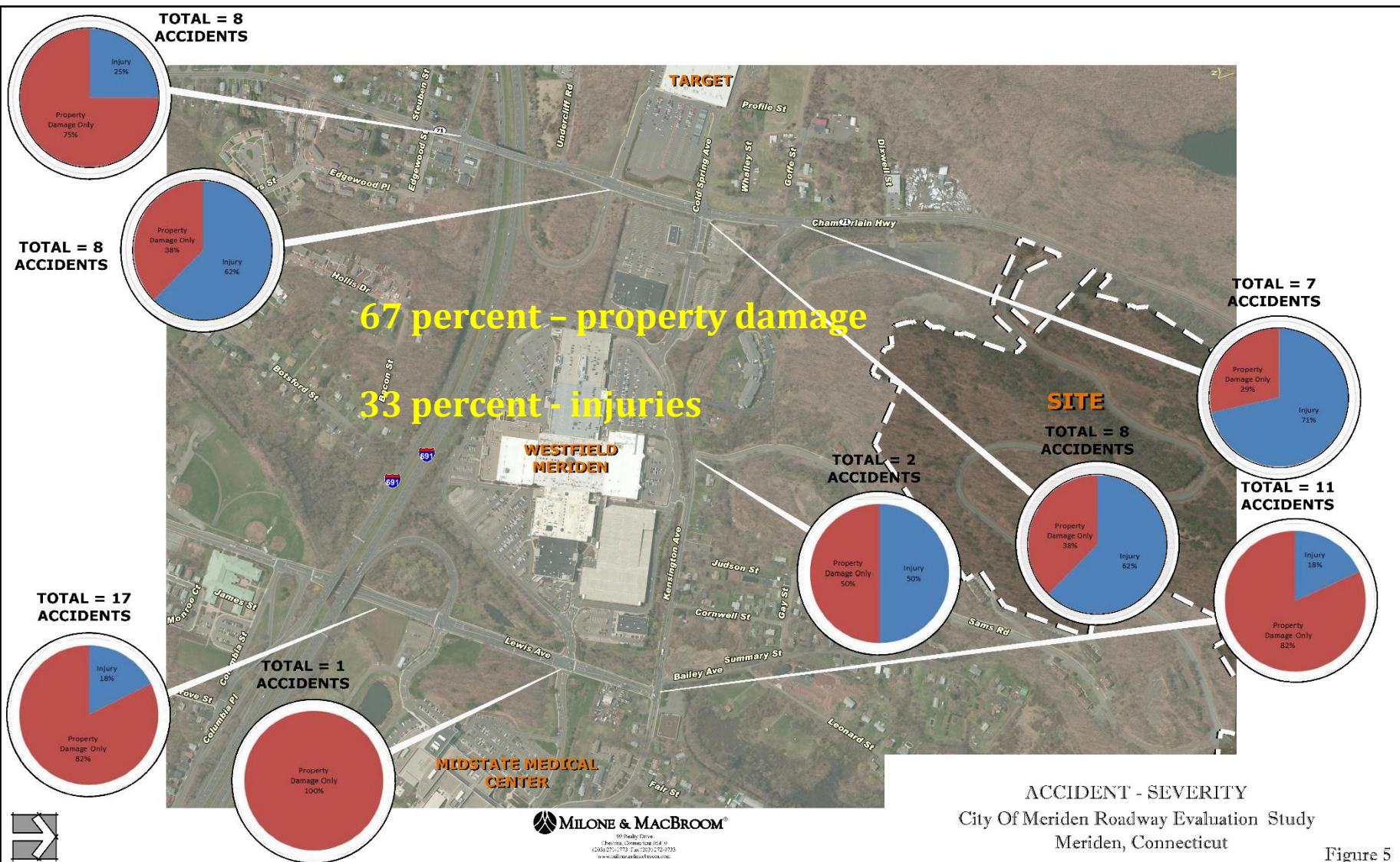


Figure 4

Existing Safety Conditions - Accident Severity



Existing Traffic Conditions

- **Vehicular Speeds**
- **Traffic Volumes**
 - **Average Daily Traffic**
 - **Segment and Intersection Counts**
- **Capacity Analysis – Level of Service**

Roadway	Posted Speed	85 th Percentile Speed
Chamberlain Hwy	35 mph	55 mph
Kensington Avenue	25 mph	41 mph
Lewis Avenue	25 mph	34 mph

Location	Average Daily Traffic (ADT)			
	Year 2007	Year 2010	Year 2013	Year 2014*
Chamberlain Highway north of Kensington Avenue	6,100	6,000	5,800	6,203
Chamberlain Highway north of the I-691 WB on ramp	12,000	12,000	10,700	10,797
Kensington Avenue east of Chamberlain Highway	----	6,300	----	6,085
Lewis Avenue north of the mall entrance	----	6,200	----	----
Lewis Avenue south of the mall entrance	----	----	----	11,271

Source: Connecticut Department of Transportation (* ATR data collected by MMI)
 "----": Not Available

Existing Traffic Conditions

IMAGE SOURCE: GOOGLE EARTH, AERIAL PHOTOGRAPHY, COURTESY OF THE CITY OF MERIDEN, CONNECTICUT

AM	B
PM	B
SAT	B

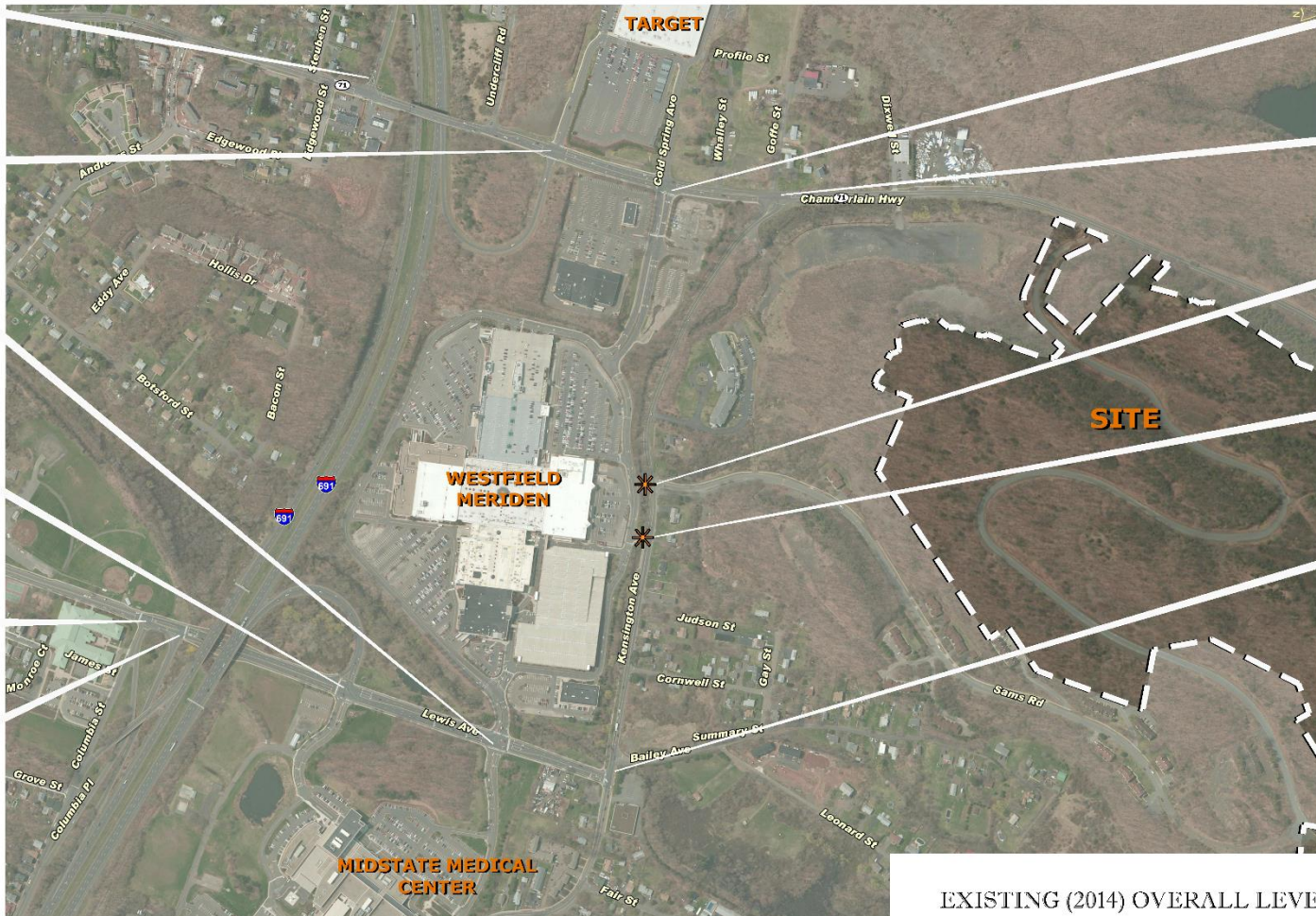
AM	A
PM	A
SAT	A

AM	B
PM	B
SAT	A

AM	B
PM	B
SAT	B

AM	A
PM	B
SAT	B

AM	A
PM	B
SAT	B



AM	A
PM	B
SAT	B

AM	A
PM	B
SAT	B

AM	B
PM	B
SAT	B

AM	A
PM	B
SAT	B

AM	B
PM	B
SAT	B

LEGEND

(LOS) A-B	Green
(LOS) C-D	Yellow
(LOS) E-F	Red



NOTE:
* = LEVEL OF SERVICE AT UN-SIGNALIZED INTERSECTIONS
IS FOR MINOR STREET APPROACH



EXISTING (2014) OVERALL LEVEL OF SERVICE
City Of Meriden Roadway Evaluation Study
Meriden, Connecticut

Figure 9

Existing Multi-modal Amenities



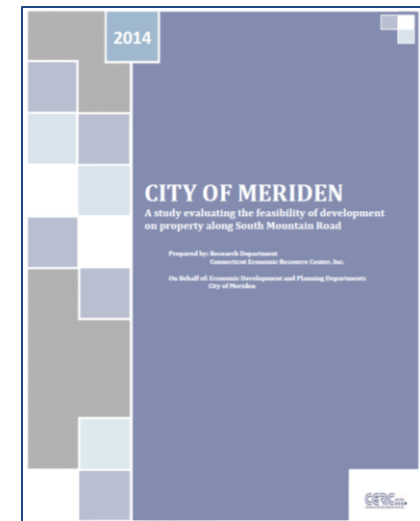
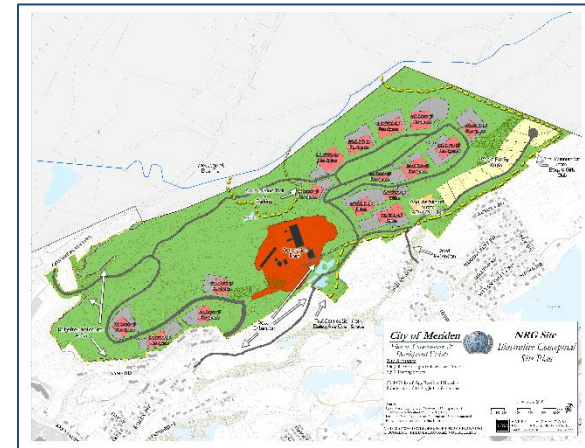
EXISTING MULTI-MODAL AMENITIES
City Of Meriden Roadway Evaluation Study
Meriden, Connecticut

Figure 10

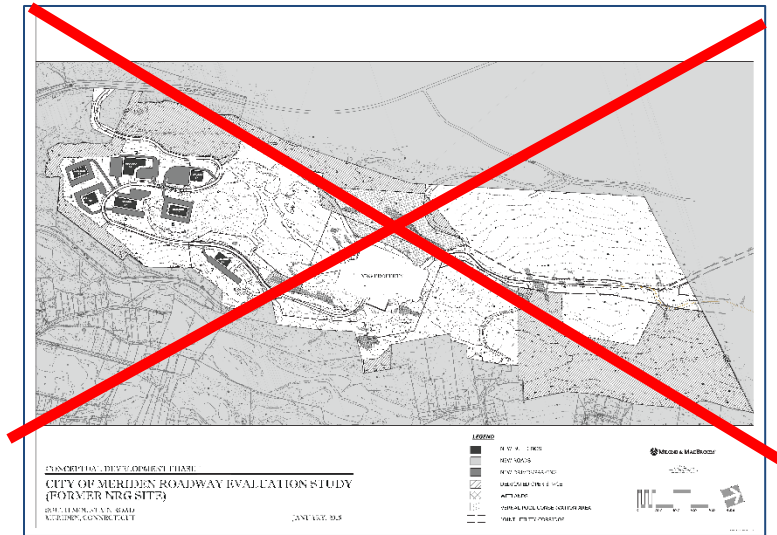


Future Development Potential

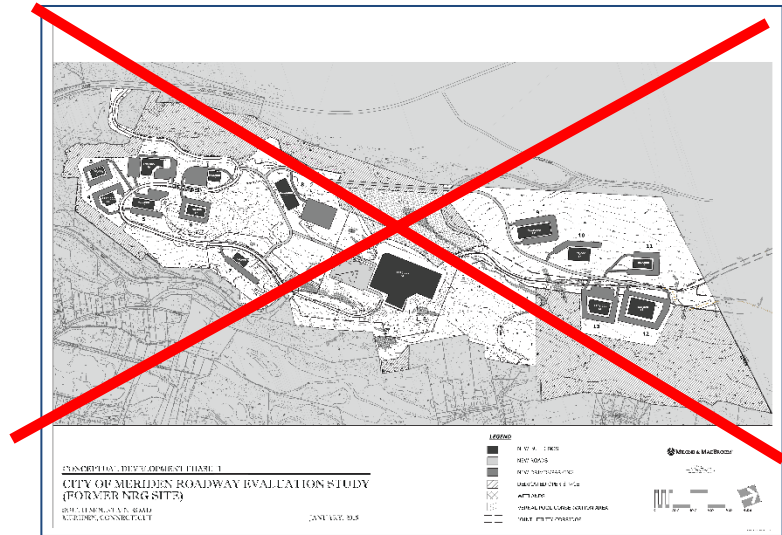
- **2009 Plan of Conservation and Development**
 - Offices, medical care, light industrial, biomedical research, indoor storage, heavy industrial
- **2014 Connecticut Economic Research Center Study**
 - Destination recreation, wind/solar generation, technology/healthcare office space, light manufacturing
- **Preferred Land-use**
 - Two-thirds light industrial and one-third general office



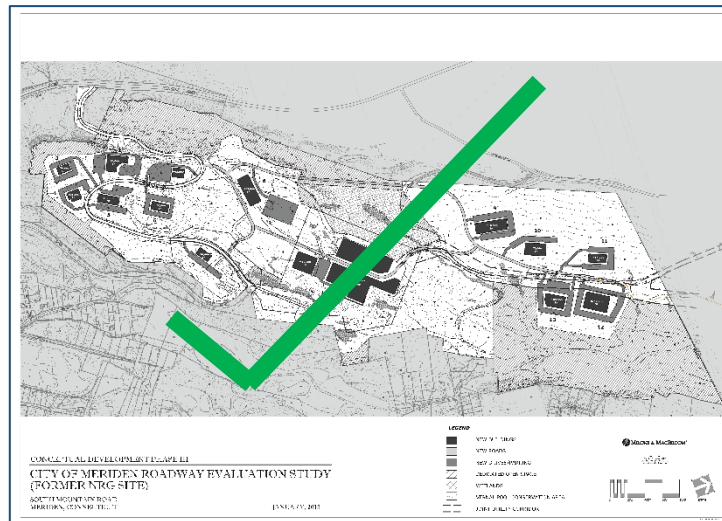
Preliminary Site Development Concepts



Preliminary Concept 1

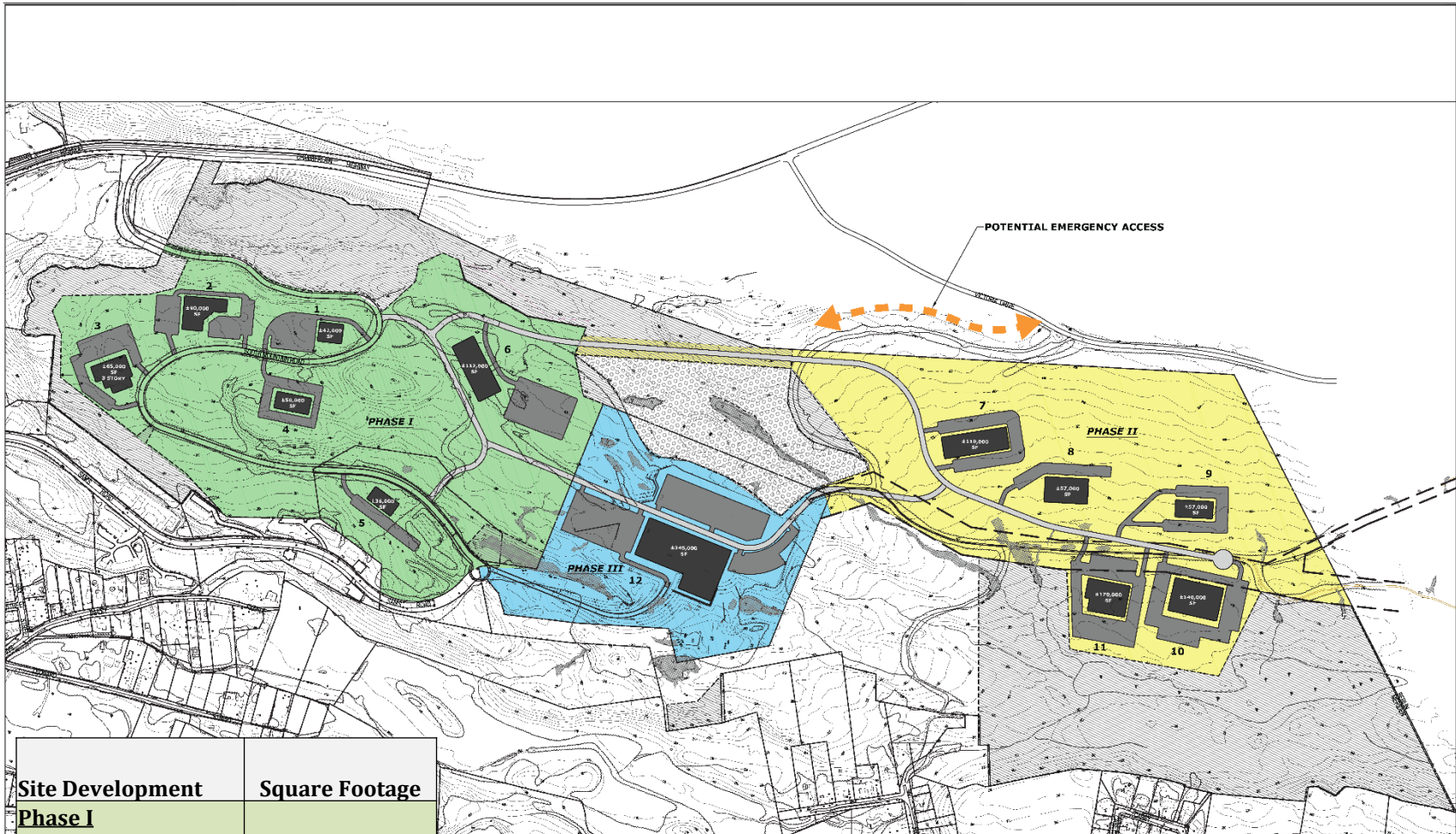


Preliminary Concept 2



Preliminary Concept 3

Preferred Site Development Concept



Site Development	Square Footage
Phase I	
6 Buildings	395,000
Phase II	
5 Buildings	484,000
Phase III	
1 Building	345,000
TOTAL	1,224,000

EVALUATION STUDY

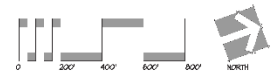
APRIL, 2015

LEGEND

- NEW BUILDINGS
- NEW ROADS
- NEW DRIVES/PARKING
- DEDICATED OPEN SPACE
- WETLANDS
- VERNAL POOL CONSERVATION AREA
- JOINT UTILITY CORRIDOR

MILONE & MACBROOM

15500 155th Avenue, Suite 100
 Golden, Colorado 80401
 www.miloneandmacbroom.com



Future Traffic Projections

- **20 year planning horizon (Year 2034)**
- **One percent per year growth**
- **Estimated Site Traffic**
 - **Weekday morning peak – 1,340 vehicles**
 - **Weekday afternoon peak – 1,325 vehicles**
 - **Saturday midday peak – 290 vehicles**

Build-out Traffic Conditions

DATE: 11/08/2023 10:50:30 AM USER: \\HPD\GIS\jordan.milone\work\2023-24\11-08-2023-10-50-30 AM.dwg

AM	B
PM	C
SAT	C

AM	A
PM	C
SAT	B

AM	B
PM	D
SAT	B

AM	B
PM	C
SAT	B

AM	A
PM	C
SAT	C

AM	A
PM	B
SAT	B

AM	A
PM	E
SAT	C

AM	E
PM	F
SAT	B

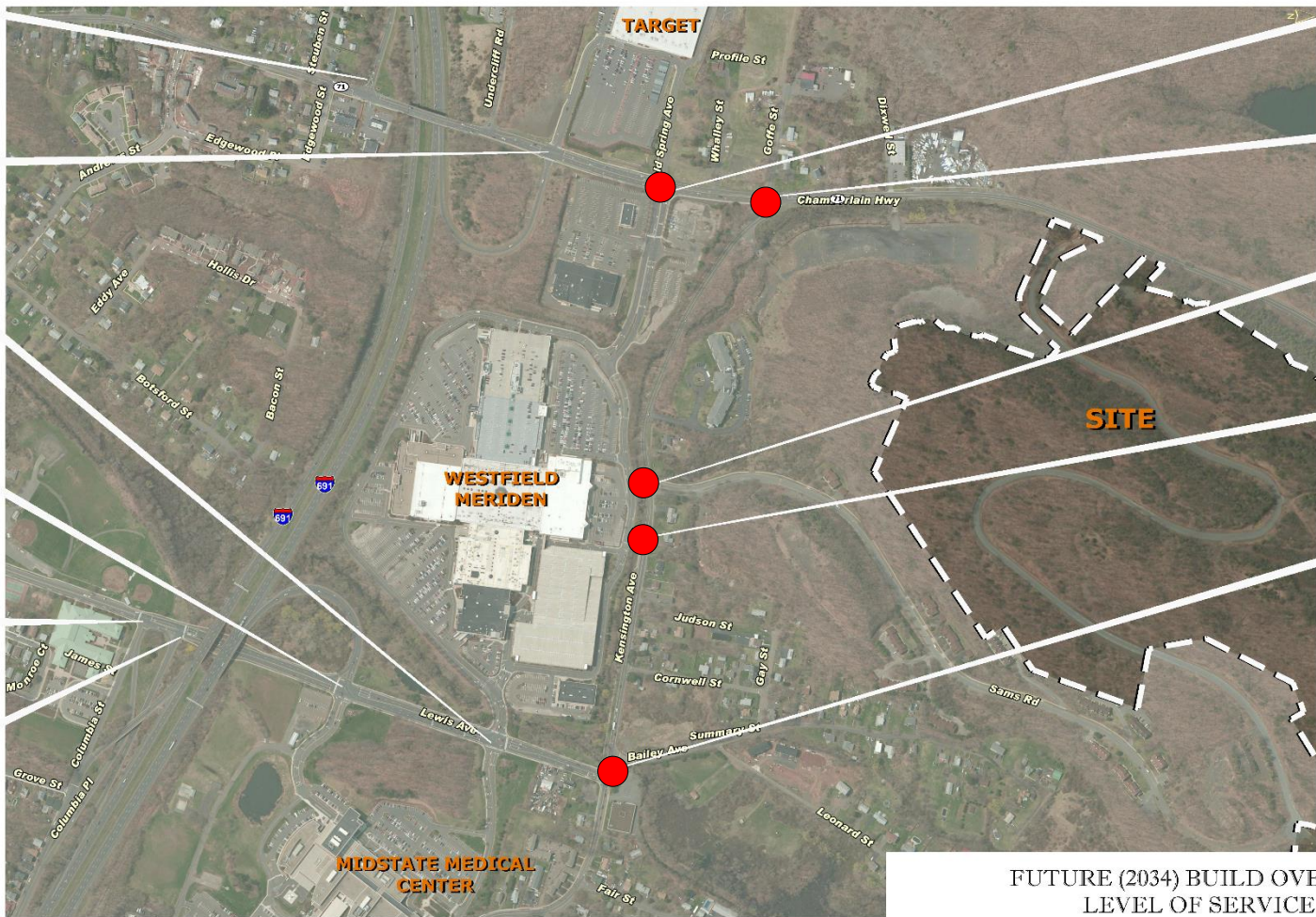
AM	D
PM	E
SAT	C

AM	C
PM	F
SAT	C

AM	D
PM	F
SAT	B

LEGEND

(LOS)	A-B
(LOS)	C-D
(LOS)	E-F



* NOTE:
= LEVEL OF SERVICE AT UN-SIGNALIZED INTERSECTIONS
IS FOR MINOR STREET APPROACH



FUTURE (2034) BUILD OVERALL
LEVEL OF SERVICE
City Of Meriden Roadway Evaluation Study
Meriden, Connecticut

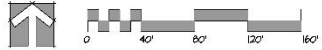
Figure 25

Recommendations - Roadway

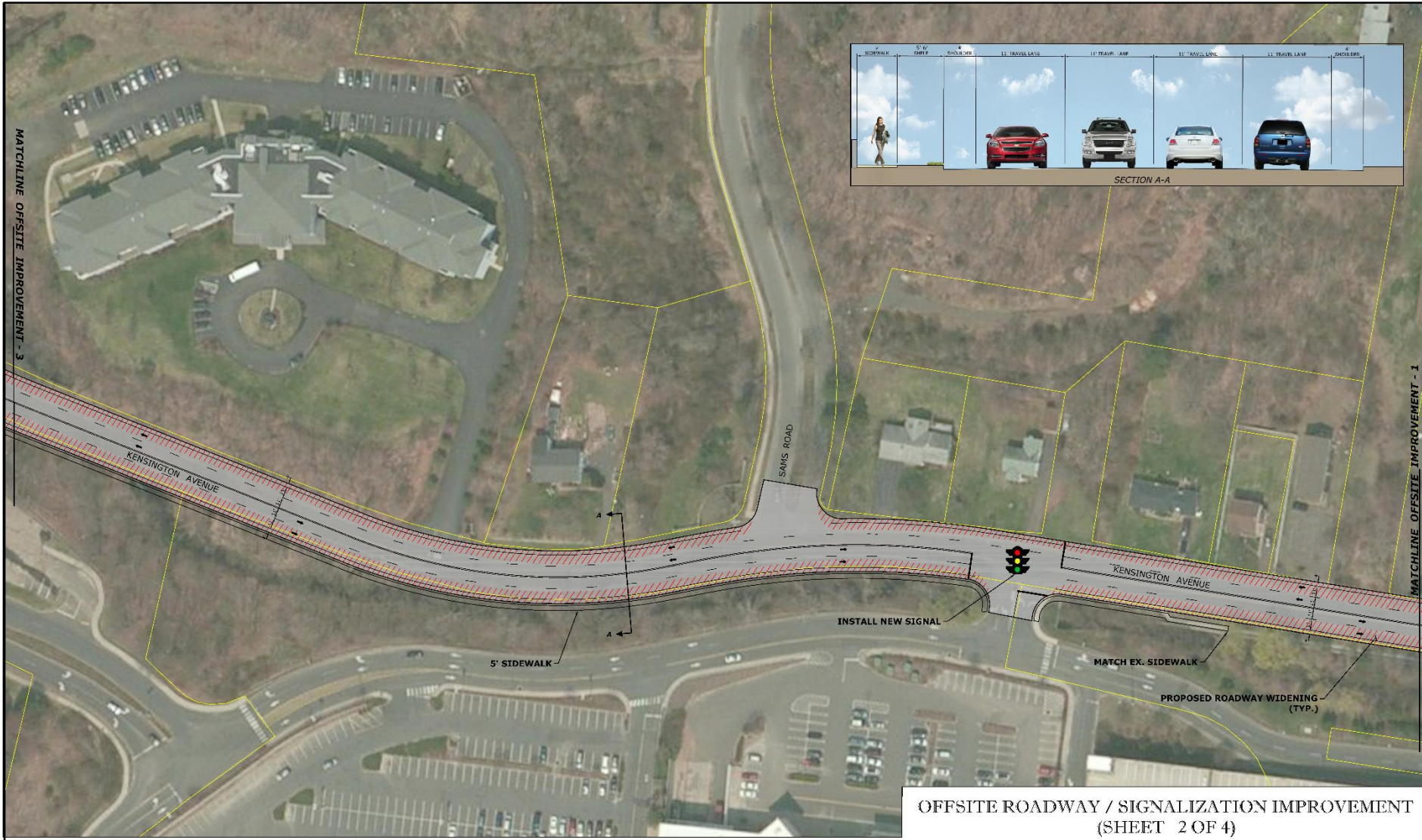


OFFSITE ROADWAY / SIGNALIZATION IMPROVEMENT
(SHEET 1 OF 4)

City Of Meriden Roadway Evaluation Study
Meriden, Connecticut



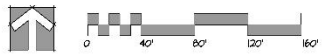
Recommendations - Roadway



OFFSITE ROADWAY / SIGNALIZATION IMPROVEMENT
(SHEET 2 OF 4)

City Of Meriden Roadway Evaluation Study
Meriden, Connecticut

Figure 27



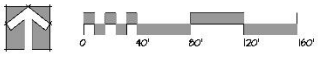
MILONE & MACBROOM®
an Equal Opportunity Firm
 1000 Main Street
 10th Floor, Suite 1000
 1000 Main Street, Meriden, CT 06450
 www.miloneandmacbroom.com

Recommendations - Roadway



OFFSITE ROADWAY / SIGNALIZATION IMPROVEMENT
(SHEET 3 OF 4)

City Of Meriden Roadway Evaluation Study
Meriden, Connecticut



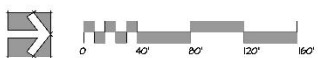
Recommendations - Roadway



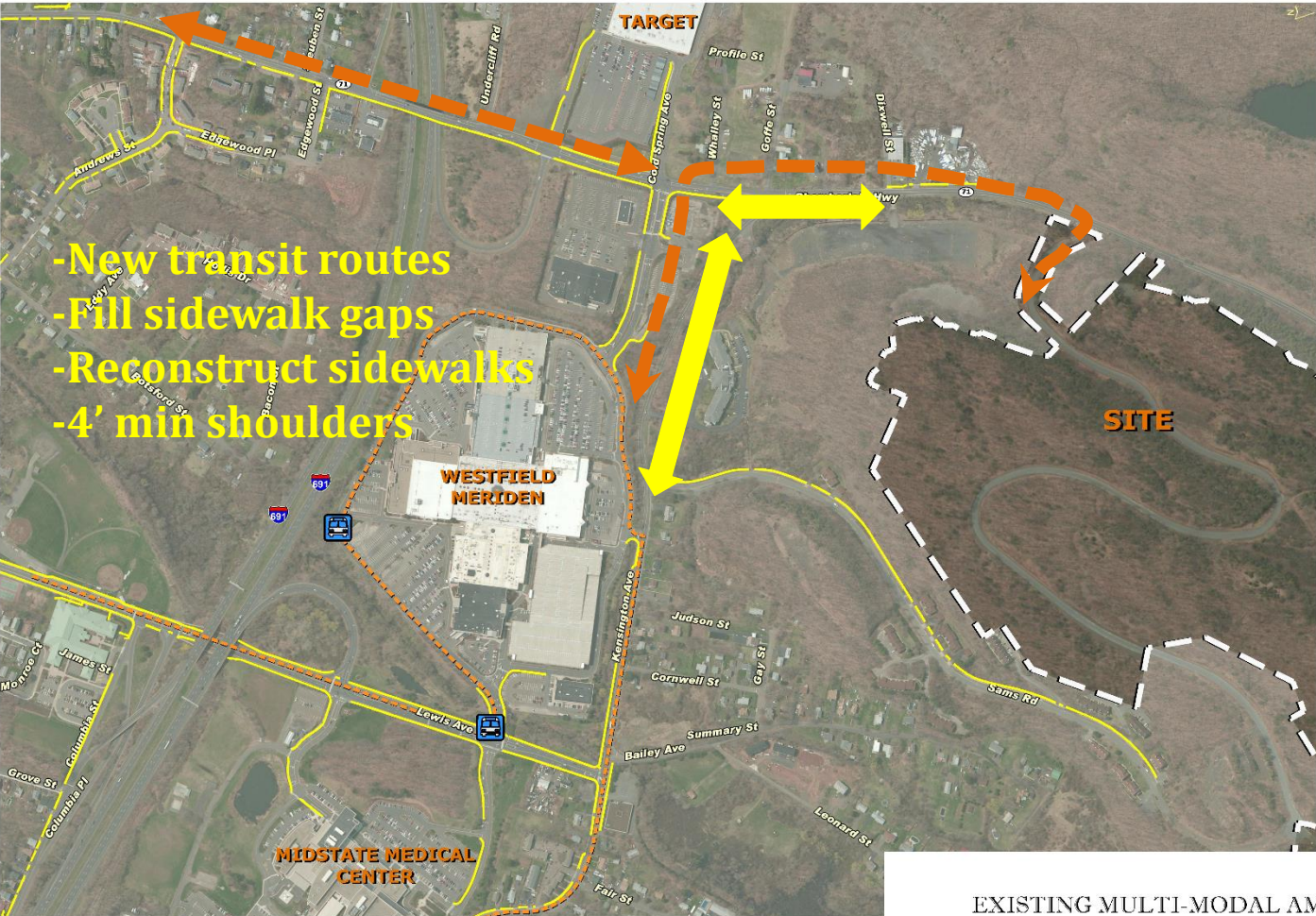
OFFSITE ROADWAY / SIGNALIZATION IMPROVEMENT
(SHEET 4 OF 4)

City Of Meriden Roadway Evaluation Study
Meriden, Connecticut

Figure 29



Recommendations – Multi-modal



Source: Google Earth, City of Meriden, Milone & Macbroom

Probable Offsite Construction Cost Estimate

	COST
2015 Construction Costs	\$8,719,800
Contingencies (±25%)	\$2,180,000
Incidentals to Construction (±25%)	\$2,180,000
Total 2015 Project Cost	\$13,079,800
TOTAL 2015 PROJECT COST (ROUNDED)	\$13,080,000

Note: Cost estimate does not account for future inflation costs, cost of right of way impacts, utility relocations

Funding Sources – Offsite Improvements

- **Traffic Impact Fees/Developer Contribution**
- **Local Transportation Capital Improvement Program (LOTICIP)**
- **Surface Transportation Program (STP) - Urban**
- **Transportation Alternatives Program (TAP)**



Questions?

